



Olfactory receptor 2J2 Polyclonal Antibody

Catalog No	YP-Ab-13500
Isotype	IgG
Reactivity	Human;Rat;Mouse;
Applications	WB;IF;ELISA
Gene Name	OR2J2
Protein Name	Olfactory receptor 2J2
Immunogen	The antiserum was produced against synthesized peptide derived from human OR2J2. AA range:263-312
Specificity	Olfactory receptor 2J2 Polyclonal Antibody detects endogenous levels of Olfactory receptor 2J2 protein.
Formulation	Liquid in PBS containing 50% glycerol, 0.5% BSA and 0.02% sodium azide.
Source	Polyclonal, Rabbit,IgG
Purification	The antibody was affinity-purified from rabbit antiserum by affinity-chromatography using epitope-specific immunogen.
Dilution	Western Blot: 1/500 - 1/2000. Immunofluorescence: 1/200 - 1/1000. ELISA: 1/20000. Not yet tested in other applications.
Concentration	1 mg/ml
Purity	≥90%
Storage Stability	-20°C/1 year
Synonyms	
Observed Band	35kD
Cell Pathway	Cell membrane; Multi-pass membrane protein.
Tissue Specificity	
Function	function:Odorant receptor .,polymorphism:Three OR2J2 alleles are known: 6M1-6*01, 6M1-6*02 and 6M1-6*03. The sequence shown is that of allele 6M1-6*01.,similarity:Belongs to the G-protein coupled receptor 1 family.,
Background	olfactory receptor family 2 subfamily J member 2(OR2J2) Homo sapiens Olfactory receptors interact with odorant molecules in the nose, to initiate a neuronal response that triggers the perception of a smell. The olfactory receptor proteins are members of a large family of G-protein-coupled receptors (GPCR) arising from single coding-exon genes. Olfactory receptors share a 7-transmembrane domain structure with many neurotransmitter and hormone receptors and are responsible for the recognition and G protein-mediated transduction of odorant signals. The olfactory receptor gene family is the largest in the genome. The nomenclature assigned to the olfactory receptor genes and proteins for this organism is independent of other organisms. [provided by RefSeq, Jul 2008],



matters needing attention

Avoid repeated freezing and thawing!

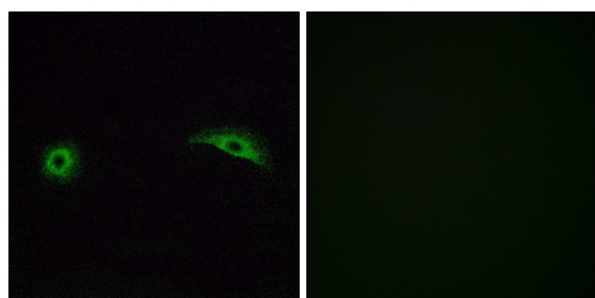
Usage suggestions

This product can be used in immunological reaction related experiments. For more information, please consult technical personnel.

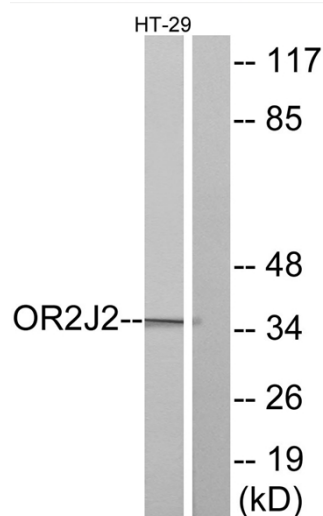
Products Images



Western Blot analysis of various cells using Olfactory receptor 2J2 Polyclonal Antibody



Immunofluorescence analysis of A549 cells, using OR2J2 Antibody. The picture on the right is blocked with the synthesized peptide.



Western blot analysis of lysates from HT-29 cells, using OR2J2 Antibody. The lane on the right is blocked with the synthesized peptide.